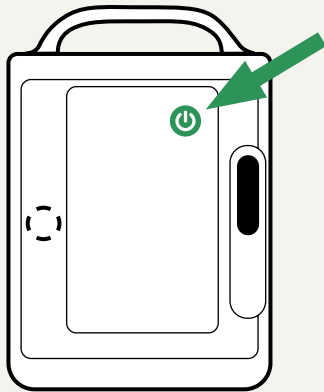


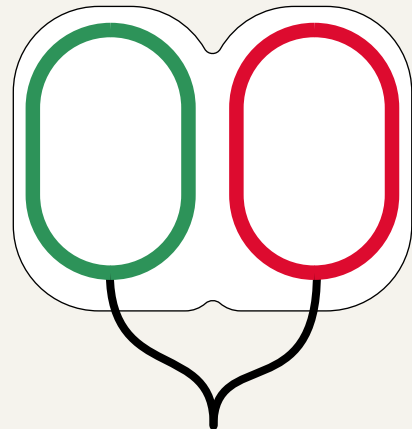
Using a defibrillator



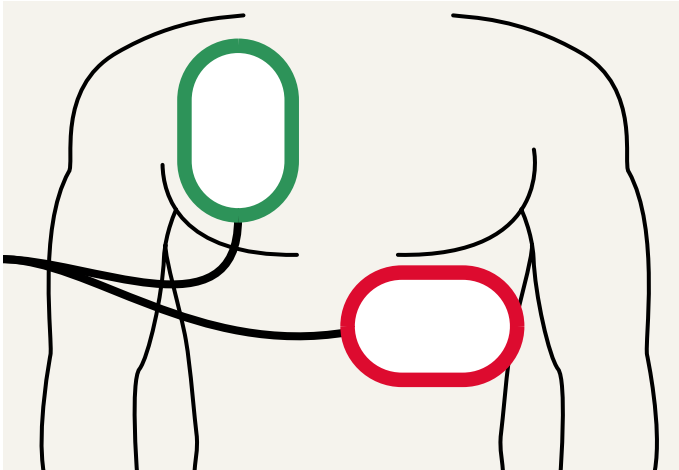
If the patient doesn't respond, **CALL THE EMERGENCY NUMBER 112.**
Start CPR immediately and ask someone to bring a defibrillator.



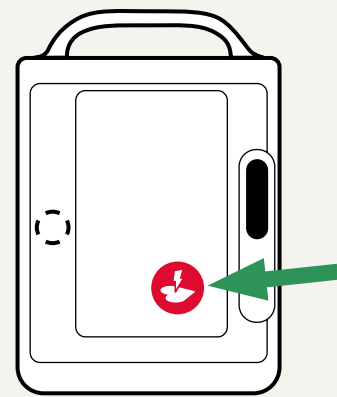
1. Open the defibrillator lid and turn it on.



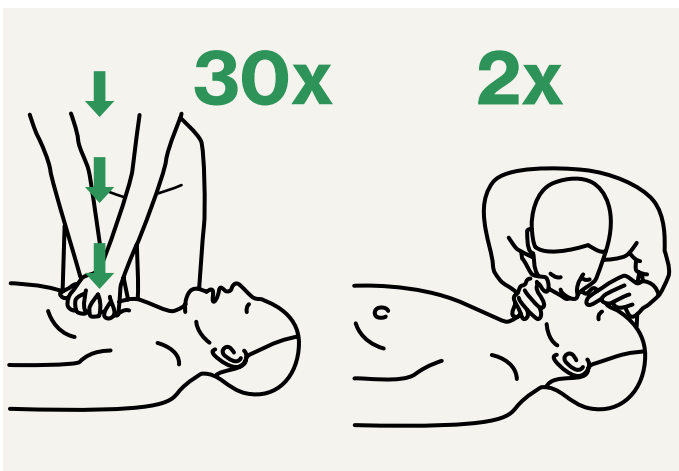
2. Take out the electrodes.



3. Attach the electrodes to the patient's chest. **Do not touch the patient during rhythm analysis!**



4. Press the shock button if the device instructs you to do so. Stay clear of the patient!



5. Continue CPR immediately after the shock is delivered. Follow the device's instructions as they are given.

You can stop resuscitation when:

- a professional takes over,
- the patient starts breathing again, or
- you are physically unable to continue.